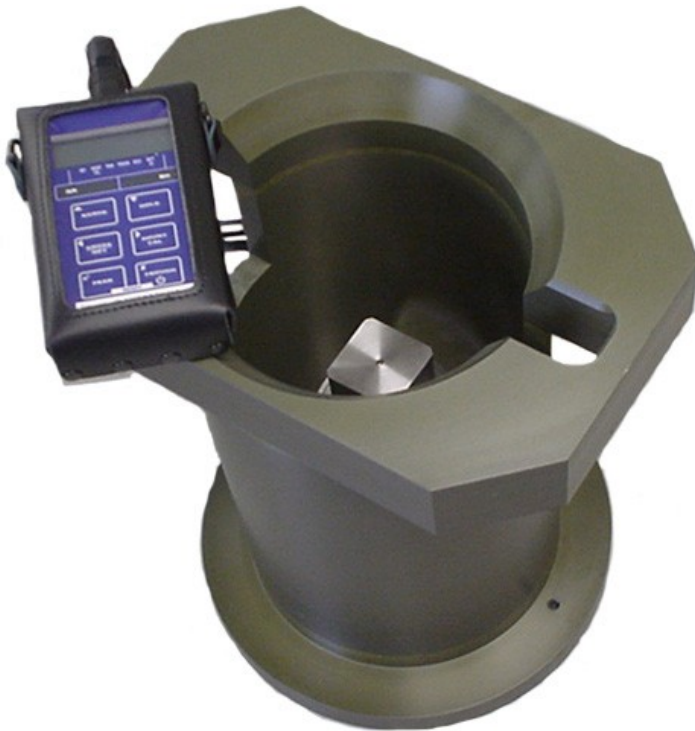


ISO 13628-8 Class 5 (API 17D) Surface Torque Tool Verification Unit.



DESCRIPTION

This unit is used to give pre-dive surface confirmation of the torque tool calibration. It consists of a standard ISO class 5 torque reaction bucket with sturdy base and built in torque sensor. The unit comes complete with USB cable to connect to the FORUM Torque Tool Control System for Auto Calibration.

FEATURES

ISO 13628-8 Fig 18 (API 17D) Class 5

Max Torque 6,750Nm (5,000ft lbs)

Hand Held Digital Read Out

USB output to Torque Tool Control System

Supplied in offshore suitable transit case

ISO 13628-8 Class 5 (API 17D) Surface Torque Tool Verification Unit.

SPECIFICATIONS

Torque Interface: ISO 13628-8 fig 18 Class 5
 Maximum Torque 6,750Nm (5,000ft lbs)
 Handheld Unit Battery Powered
 Materials: Steel Shaft, Aluminium Housing

WHAT'S IN THE BOX

Torque Tool Bucket inc sensor
 Handheld Display Bucket
 to Display Cable Display to
 USB Cable Handheld
 Display Charger
 Power Adaptors for display charger
 Operations & Maintenance Manual.

PART NUMBERS & OPTIONS

TX00111-100-00 Surface Verification Unit

