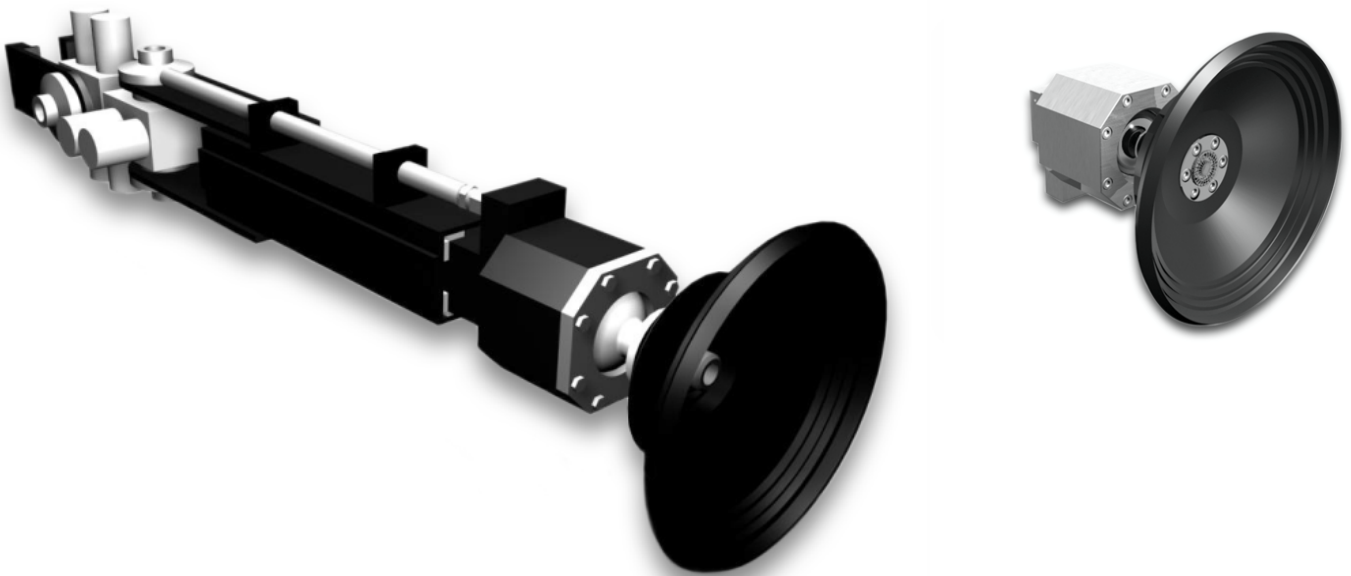


ROV Suction Foot

ROV Tools.



DESCRIPTION

The suction foot can hold an ROV to smooth surfaces such as ship hulls, submarines, platform tubulars and pipelines. The high level of grip makes it suitable for a wide range of inspection and cleaning ROV tasks.

The attachment arm is a three function manipulator consisting of shoulder pitch, jaw and extend. The arm may be used in addition to standard ROV manipulators or as a low-weight substitute manipulator.

The foot has a flexible polyurethane moulded cup, tolerant of marine growth and crustaceans, and able to attach to curved surfaces down to 400 mm (16") diameter. The cup is abrasion and tear resistant. The cup is mounted on a ball swivel joint to ease self-alignment on the target surface. The swivel can be hydraulically locked once suction is achieved, for greater rigidity.

FEATURES

High Level of Grip

300mm diameter suction cup

Suction cup mounted on lockable swivel

ROV Suction Foot

ROV Tools.

SPECIFICATIONS

Suction Foot OD	300mm (11.8")
Workpiece Diameter	Flat to 400mm diameter
Ball joint resistance	1100Nm @ 50Bar
Suction Force @3 Bar	1950kgf
Suction Force @ 1 Bar	720kgf
Weight in air/water	45/35kg
Lift at maximum reach	56kg
Maximum reach	1680mm
Extend	330mm
Shoulder yaw & Pitch	180 degrees

PART NUMBERS & OPTIONS

A760-284-001/02	Suction Foot System
-----------------	---------------------

WHAT'S IN THE BOX

Attachment Arm with foot
Low pressure pump Supply
and return hoses.
Operations & Maintenance Manual.